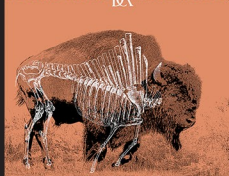


# SKETCHING & JOURNALING

with  
Professor Moh'd Bilbeisi



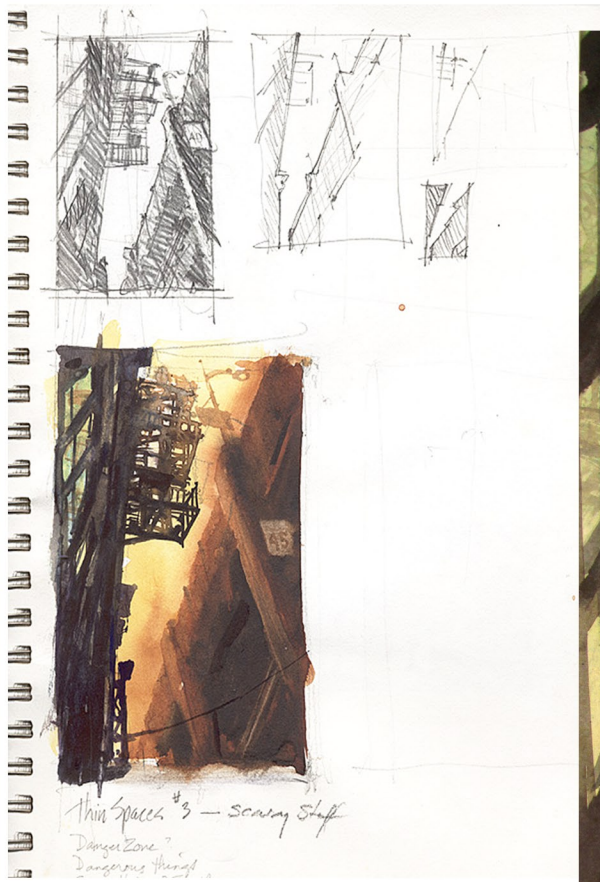
5 x 8 Moleskin portrait journal with gridded paper  
20 sheets of 8 1/2" x 11" white paper  
2HB Staedtler Mars Lumograph wood pencil  
Quality fountain pen [Lamy Safari with a broad nib is a good start]  
Pilot Precise V5/V7 rollerball pens [medium or bold]  
Quality eraser, sharpener, etc.



# COMPELLING POINTS OF VIEW

## WILLIAM G. HOOK WORKSHOP

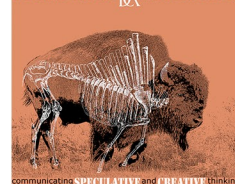
The success of a painting or illustration starts with your initial vision before you even pick up a pencil or brush or touch a keyboard. The key is learning how to understand and capture this vision in your artwork. Bill has always found his sketchbook to be one of his most valuable tools and he uses it as a visual laboratory where he “plans his successes and hides his failures...” He will share how he uses his sketchbook and camera to study, plan and create powerful and engaging images. You will learn how to see the potential in a flat or disappointing image and transform it into a powerful statement by manipulating the point of view, perspective, light and mood. His understanding and sense of composition was developed over decades while constructing and manipulating architectural renderings and how that experience has taught him to look at his environment as an artist.



Bill is internationally known for his masterful watercolor interpretations of industrial and urban settings. He is President Emeritus of the American Society of Architectural Illustrators and received numerous awards for his illustrations. He is a signature member of the NWS, NWS and CWA. He was a finalist in the Art of Watercolor Magazine world watercolor competition in Narbonne, France and was included in the International Watercolor Society CANADA 2016 exhibition in Vancouver, BC. He is currently a featured artist in the August 2016 issue of Watercolor Artist Magazine. Find his recent work on Facebook - William G. Hook, and his website: [www.wghook.com](http://www.wghook.com)

### You will need to BRING the following to participate in this workshop:

- **SKETCHBOOK** – I like 9"x12 Aquabee Super Deluxe or Stillman & Birn
- **PENCILS** – #2, B, 2B, 4B and a sharpener or a .7mm mechanical pencil.
- **ERASER** – white vinyl and kneaded rubber
- **WATERCOLOR SET w/ PALETTE & WATER CONTAINER** (paper cup)– colors I typically use include: Naples yellow, Indian yellow, yellow ochre, ultramarine blue, cobalt blue, raw umber, Dioxazine purple, undersea green (Daniel Smith), quinacridone burnt orange, pyrrol Orange
- **BRUSHES** – #6 or #7 round with a sharp point and full body – I like the DaVinci Maestro, a #10 round and any others you like.
- **STRAIGHT EDGE or RULER (6") or a TRIANGLE**
- **TAPE** – masking or 3M Magic Tape (green plaid)
- **DIGITAL CAMERA or PHONE** – with a digital display – make sure it is fully charged

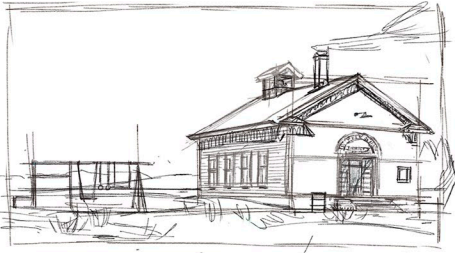




PLEASE HAVE THE PROCREATE



APP LOADED ON YOUR DEVICE



# IPAD DRAWING/PAINTING WORKSHOP

DEVICE • IPAD 3 OR IPAD PRO STYLUS • WACOM BAMBOO OR APPLE PENCIL (PRO) UMBRELLA • (BLACK IS BEST)



**HENRY SORENSON** is Past President of the Design Communication Association and Past President of the American Society of Architectural Illustrators. His award-winning Architectural Illustration, Architectural Field Painting, and Architectural Photography have been published and exhibited internationally for more than 20 years.